

- MINE BOUNDARY
- BLOCK LIMIT
- TRENCH LIMIT
- CARNEY SPLIT
- CARNEY NO COAL LINE

NOTES:
 1) Blocks and trenches referenced from EX_MP_15-1_HIS_MINE_R2
 2) Drawing developed from reference Addendum D5-4 Exhibit 2

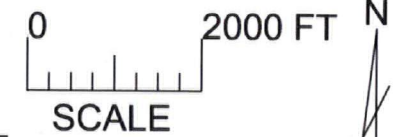
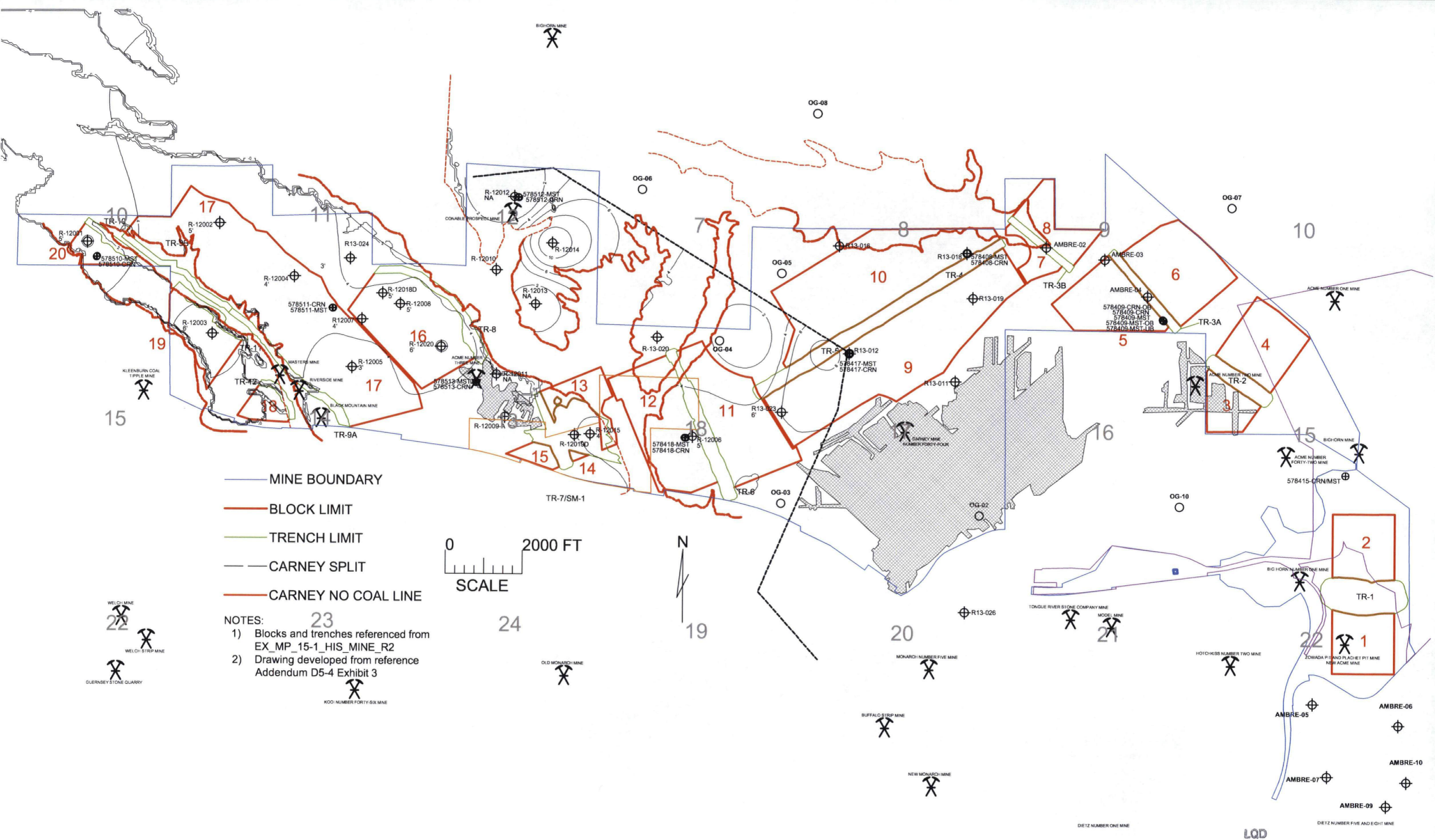
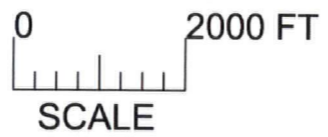


FIGURE 4.6 CARNEY COAL SEAM THICKNESS ISOPACH EAST OF SEAM SPLIT WITH PROPOSED MINE LAYOUT

LQD
 JAN 27 2017
 RECEIVED



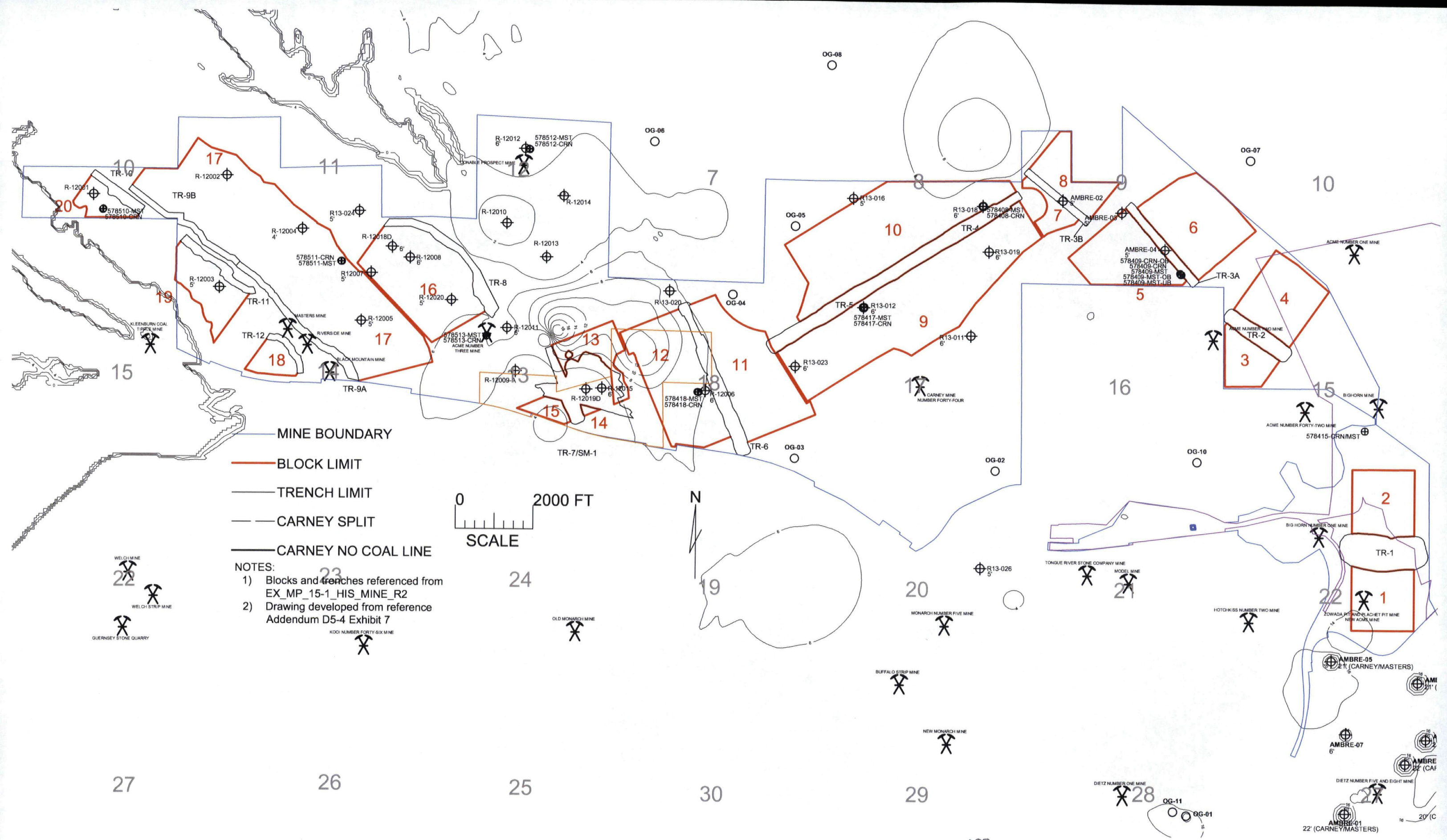
- MINE BOUNDARY
- BLOCK LIMIT
- TRENCH LIMIT
- CARNEY SPLIT
- CARNEY NO COAL LINE



- NOTES:
- 1) Blocks and trenches referenced from EX_MP_15-1_HIS_MINE_R2
 - 2) Drawing developed from reference Addendum D5-4 Exhibit 3

FIGURE 4.7 UPPER CARNEY COAL SEAM THICKNESS ISOPACH MAP WEST OF CARNEY SEAM SPLIT WITH PROPOSED MINE LAYOUT

LQD
 JAN 27 2017
 RECEIVED



- MINE BOUNDARY
- BLOCK LIMIT
- TRENCH LIMIT
- - - CARNEY SPLIT
- CARNEY NO COAL LINE

NOTES:
 1) Blocks and trenches referenced from EX_MP_15-1_HIS_MINE_R2
 2) Drawing developed from reference Addendum D5-4 Exhibit 7

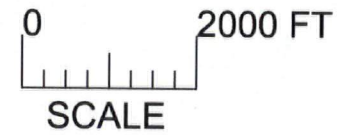


FIGURE 4.11 MASTERS COAL THICKNESS ISOPACH WITH PROPOSED MINE LAYOUT

LQD
 JAN 27 2017
 RECEIVED

