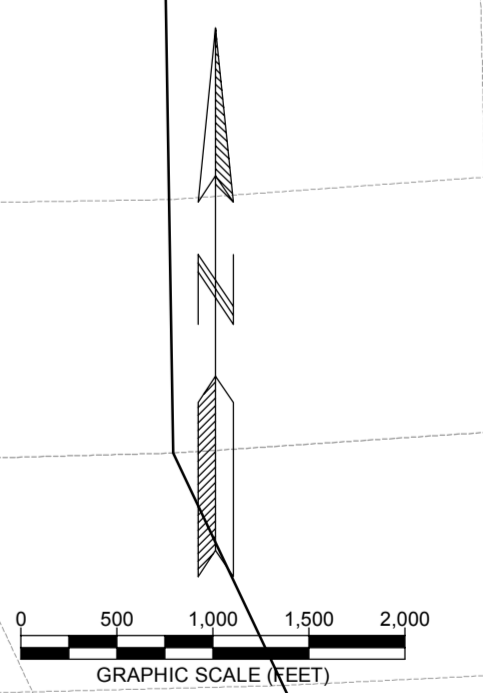


LEGEND

	APPROXIMATE SURFACE MINING EXTENTS		WATER LINE
	DISTURBANCE BOUNDARY		PROPOSED WATER LINE
	DISTURBANCE FENCING		TANKS
	HAUL ROAD		SPRING
	STOCKPILE LOCATION		STOCKPILE LOCATION
	PADLOCK RANCH COMPANY		
	OPEN PIT		
	TOPSOIL STRIPPING		
	RECLAMATION		

Brook 11

NOTE:
 FENCING WILL BE INSTALLED AROUND DISTURBED AREAS AS IT PROGRESSES THROUGH THE MINE SITE. RECLAIMED AREAS WILL REMAIN FENCED FOR A PERIOD OF FIVE YEARS.



		BROOK MINE SHERIDAN COUNTY, WY 1101 SUGARVIEW DR, STE. 201 SHERIDAN, WY 82801	
YEAR 2020 PROPOSED MINING ON PADLOCK RANCH COMPANY			
REVISIONS Date Description		Drawn By: MBM Checked By: JGB Date: 1/16/13	
FILE: AOC_PERMIT_BUFFER_QUADS			