

May 28, 2008

Dennis M. Boal, Chair of Environmental Quality Council  
122 W. 25th Street, Herschler Bldg., Rm. 1714  
Cheyenne, WY 82002

**FILED**

JUN 03 2008

Terri A. Lorenzon, Director  
Environmental Quality Council

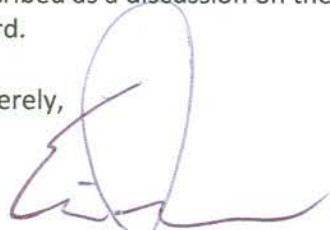
Dear Dennis and other members of the Environmental Quality Council:

My name is Dr. Eric Jensen, and I am a geologist who has been working in northeastern Wyoming for several years. It has come to my attention that a meeting is scheduled for discussion of a filed petition for "Designation of an Area Known as Sand Creek as Rare and Uncommon" (EQC Docket No. 07-1102) on June 24 in Sundance, Wyoming. The names of myself and a company with which I am affiliated (Bronco Creek Exploration, Inc.) appear numerous times in the petition. For this reason, and in recognition of several misleading and incorrect statements made in the petition, I would very much like the opportunity to make comment and voice an opinion in the discussion on June 24. I do recognize that the time of the Council is valuable and that this meeting is not intended as a forum for public opinion. However, due to the negative effects that acceptance of this petition will have on our company's operations, and in order to maintain the impartiality mandated by the EQC's mission statement, we would like our voice to be heard along with the petitioners. Specifically due to the number of times our name(s) appear in the petition submitted to the EQC, we feel it is only fair for us to receive some representation at this meeting.

We are a company that is committed to responsible mineral resource development. We are also one of a vanishing contingent of domestic (U.S. owned and based) mineral exploration companies. We firmly believe that mineral resource development from domestic sources is imperative and critical to our economic basis and viability as a nation. As much as biology dominates discussions of environmental protection, we feel that recognition of rare and unusual geologic environments and mineral deposits deserves consideration as well. Too often geologic environments prospective for mineral development have been cordoned off by legislative acts that failed to provide even rudimentary consideration or appreciation for what lies under the surface of the ground. We feel that the 130-year mining and exploration history in the Mineral Hill mining district has been misrepresented and purposefully downplayed in the petition (e.g. "Large portions of the petition area have been found by the USFS and local land owners to be as pristine as any on the Forest" and "is an area largely undisturbed from logging and mining" - p.10). Considering its conspicuous omission in the petition, the history of mining/exploration and significance of the remarkable geology of the area deserves equitable representation during the June 24 meeting.

From the EQC's website; "The topic of *discussion* will be the filed petition for Designation of an Area Known as Sand Creek as Rare and Uncommon, EQC Docket No. 07-1102". As this meeting has been described as a discussion on the EQC website, we hope that there is opportunity for both sides to be heard.

Sincerely,



Dr. Eric P. Jensen  
Vice President and Senior Geologist  
Bronco Creek Exploration, Inc.  
1815 E Winsett St.  
Tucson, Arizona, 85719  
520-405-2004  
ejensen@broncocreek.com



## Mining facilities of the Mineral Hill district



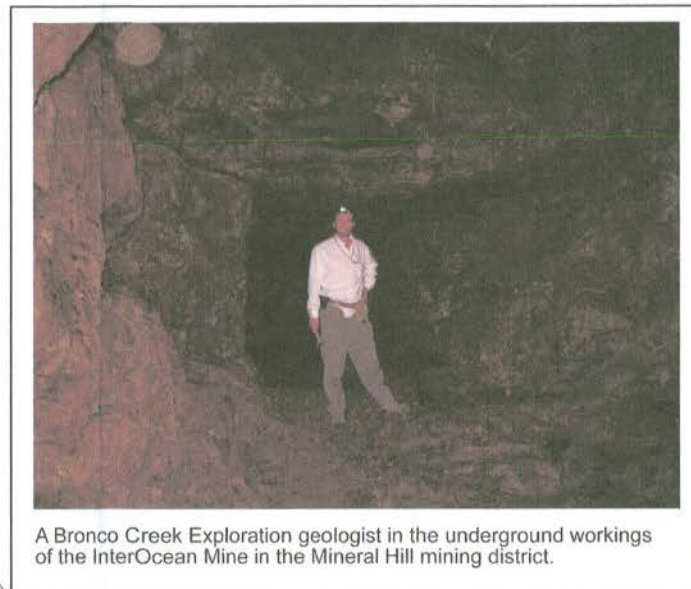
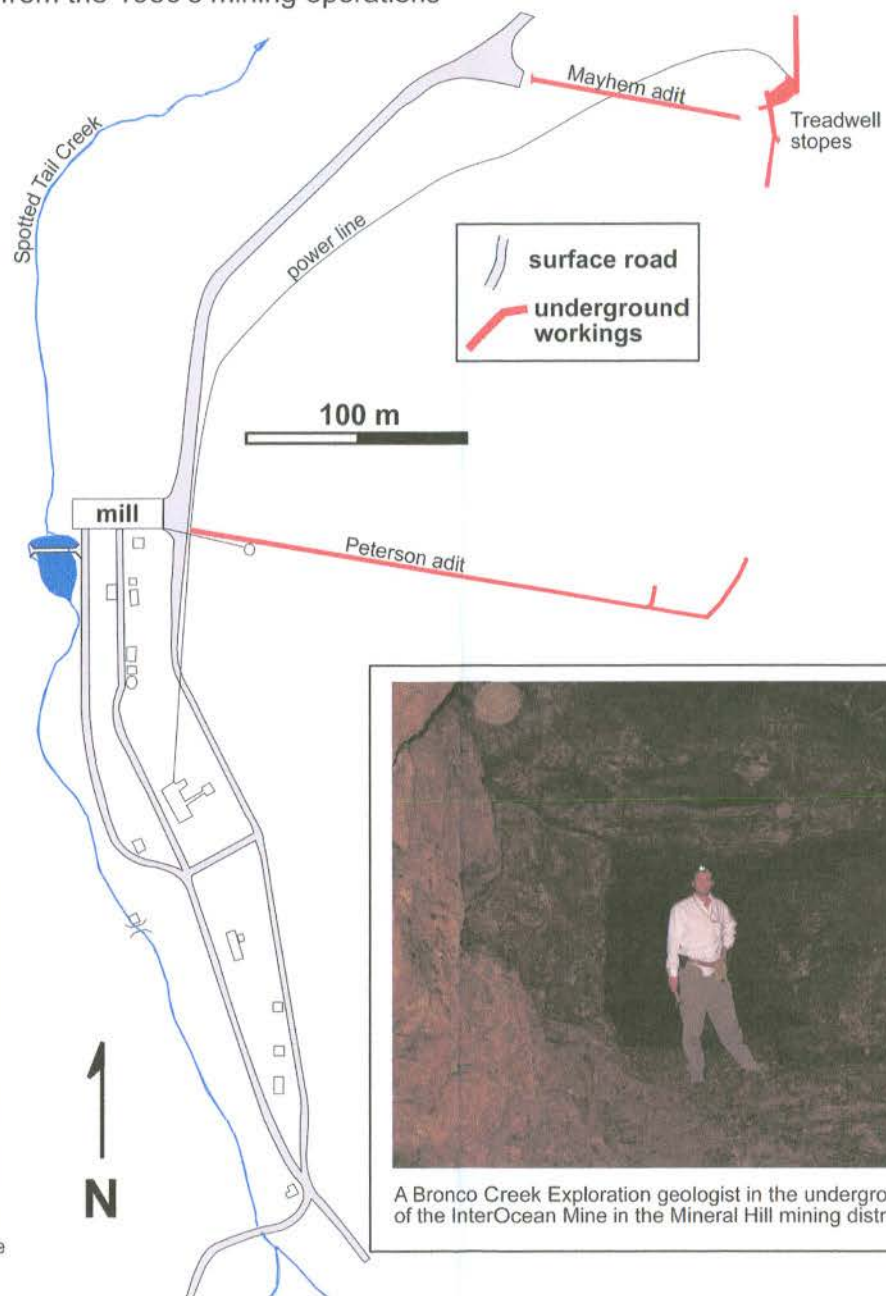
The Inter Ocean Mill as it appeared in 1903. The facility housed a 20-stamp mill and was constructed to process ore brought by tramway from the Inter Ocean Mine.



The Mineral Hill Properties mill facility above Spotted Tail Gulch as it appeared in 1935. The facility was designed as a 200 ton per day mill.

## Treadwell Mine area

Map of mining areas and facilities from the 1930's mining operations



A Bronco Creek Exploration geologist in the underground workings of the InterOcean Mine in the Mineral Hill mining district.