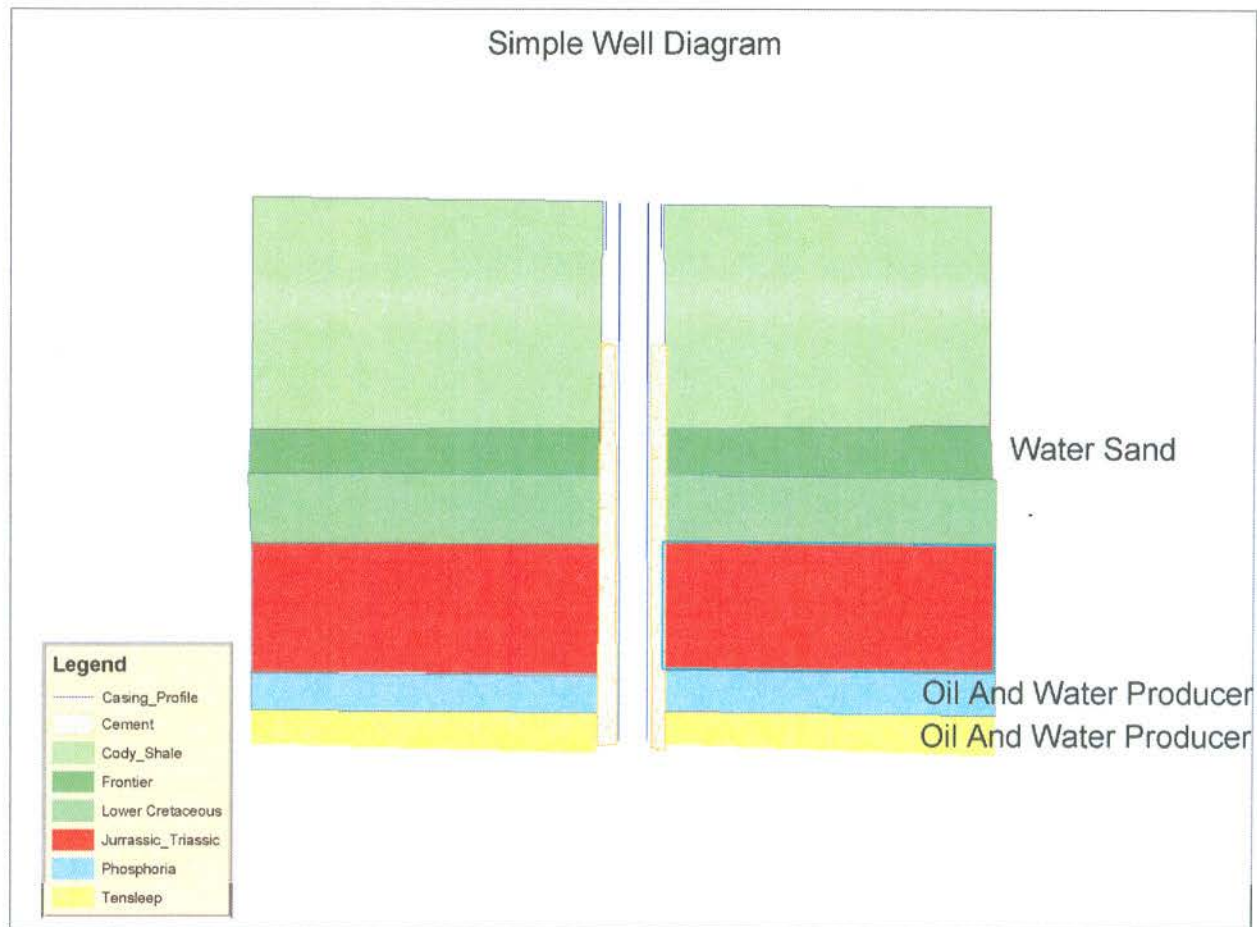


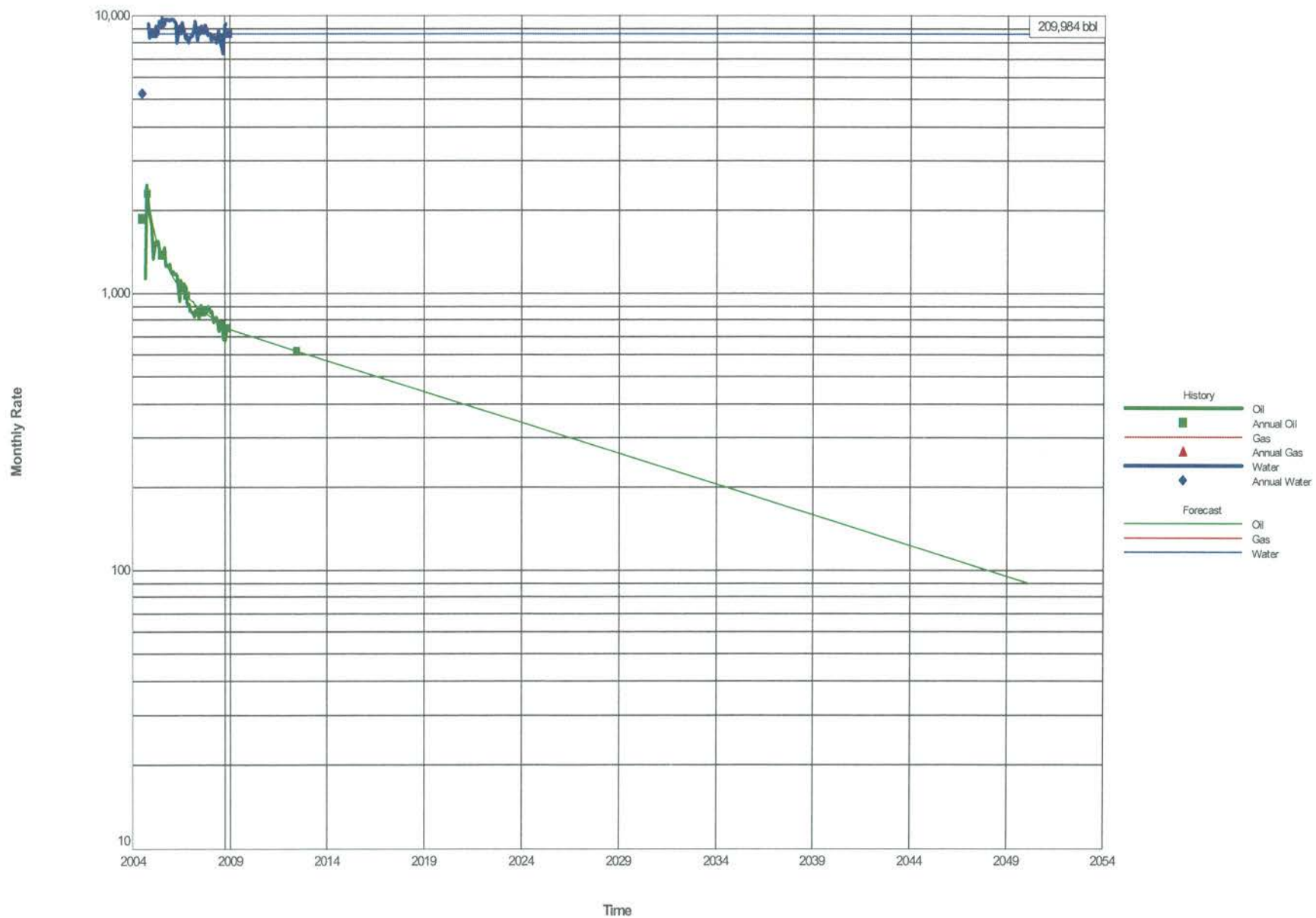
- **Production in Existing Oil Fields**

- Big Horn County
 - 570 producing wells
 - 5440 BOPD
 - 424,000 BWPD (17,800,000 gal/day)
- Park County
 - 1138 producing wells
 - 24,000 BOPD
 - 1,260,000 BWPD (53,000,000 gal/day)
- Hot springs Co.
 - 784 producing wells
 - 9920 BOPD
 - 498,000 BWPD (21,000,000 gal/day)
- Washakie County
 - 443 Producing Wells
 - 3000 BOPD
 - 29,400 BWPD (1,233,000 gal/day)
- Total of about 2900 Producing Wells in Big Horn Basin Currently
 - **Average Well Produces**
 - **14.5 BOPD**
 - **750 BWPD**

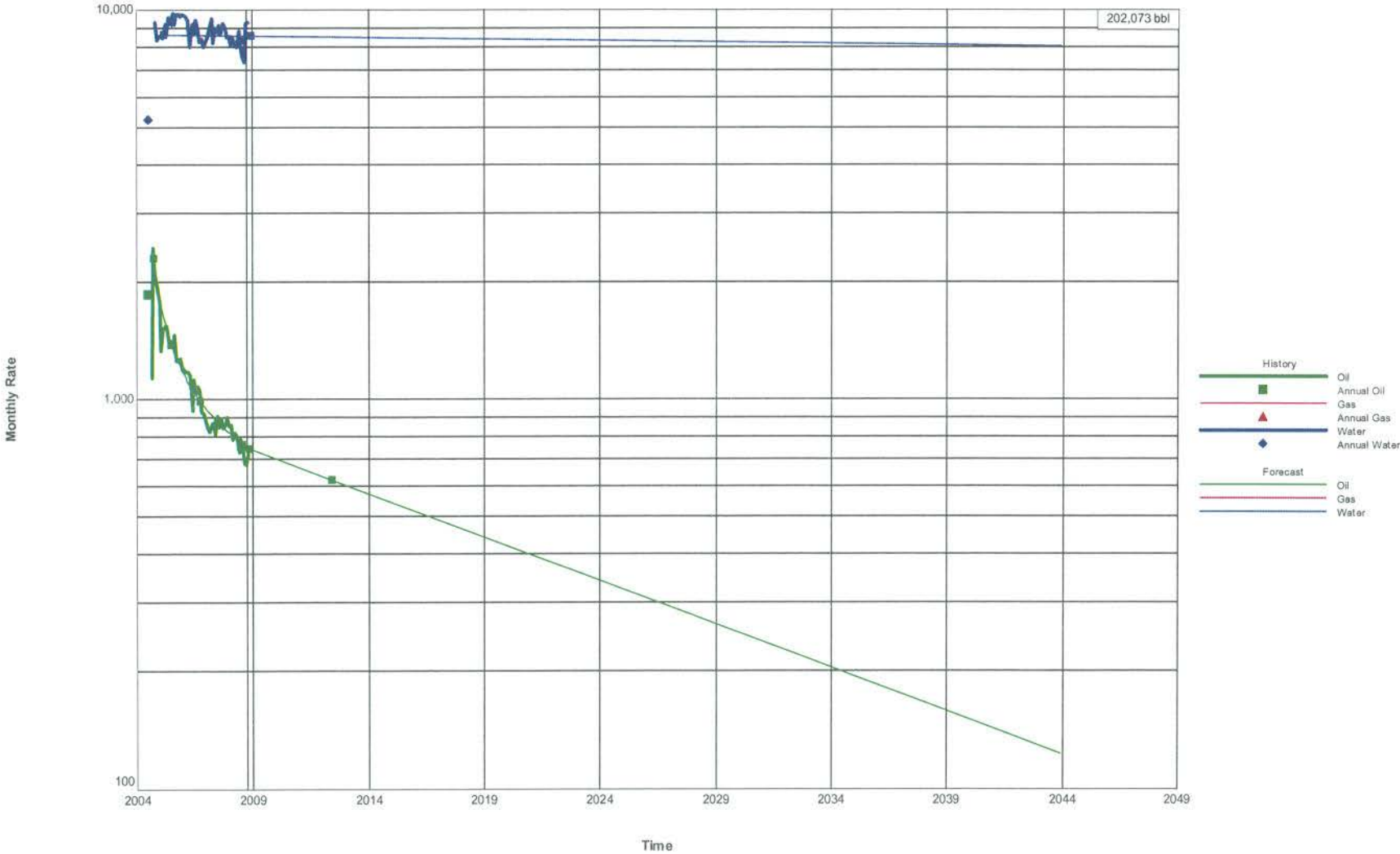
- Well Bore Diagram
- In this diagram Oil and Water are being produced simultaneously from the Phosphoria and Tensleep Formations.



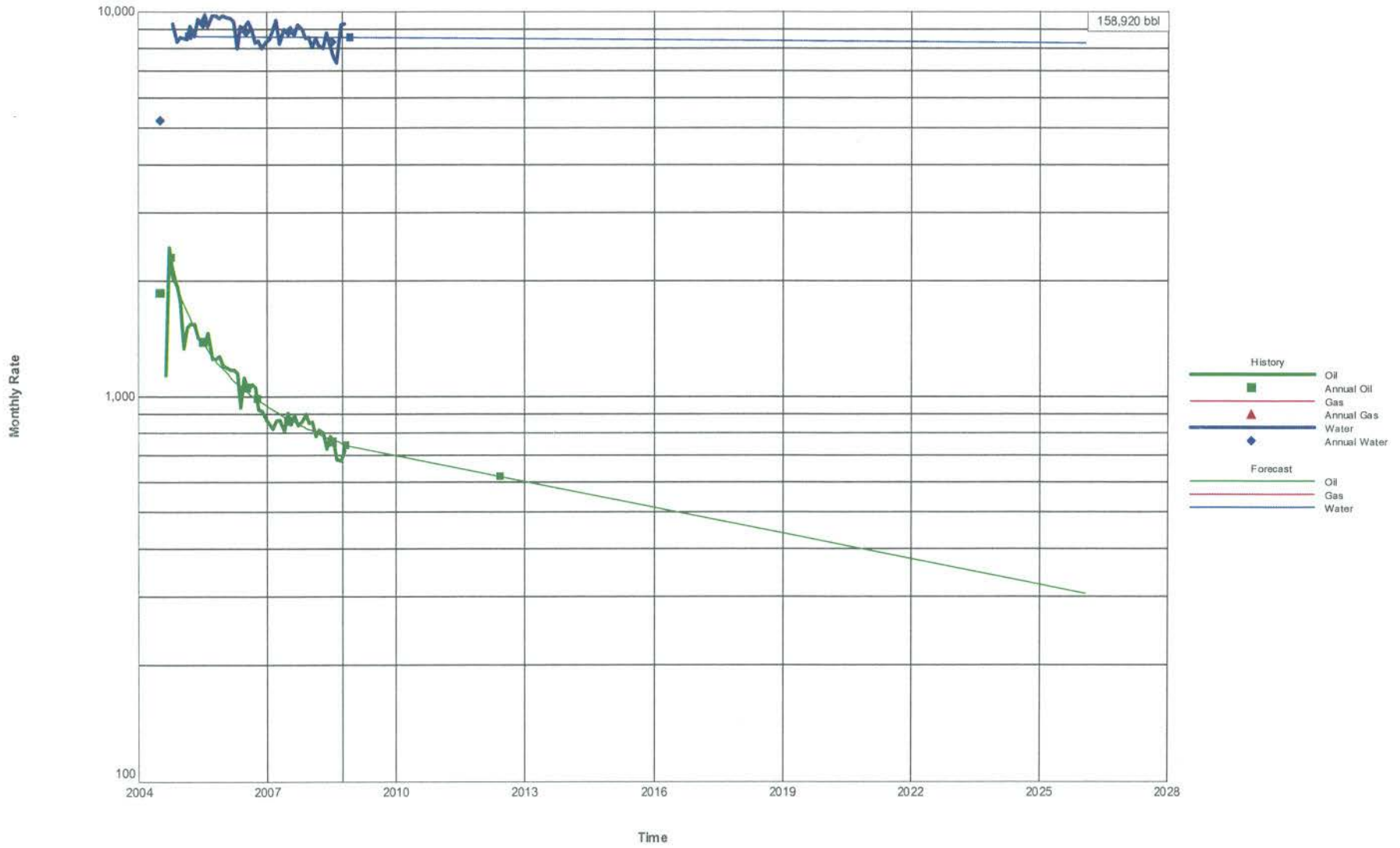
Typical Big Horn Basin Oil and Water Producer With \$.00/bbl Water Injection Cost



Typical Big Horn Basin Oil and Water Producer With \$.042/bbl Water Injection Cost



Typical Big Horn Basin Oil and Water Producer With \$.25/bbl Water Injection Cost



Oil Recovery Differences Between No Additional Cost to Inject vs \$.001/gal or \$.042/bbl and \$.25/bbl

- Oil Recovered from Typical Well with No additional costs for Injection
 - **210,000 BO**
- Oil Recovered from Typical Well with \$.001/gal or \$.042/bbl cost increase for injection of water
 - **202,000 BO**
- Oil Recovered from Typical Well with \$.25/bbl Injection Cost, a more realistic cost
 - **159,000 BO**

Results of Increasing Cost for Each Gal Water by \$.001/gal

The well becomes uneconomic faster resulting in a loss of 8,000 BO per well in reserves.

- The state and county lose an additional \$41,600 in Severance and Ad Valorem taxes.
- There is also appropriate reduction in royalties to the state and federal government that is not calculated here.
- Overall reduction in oil industry employment and activity.
- Loss of water for wildlife and livestock.

Results of Increasing Cost by \$.25 per Barrel

- Loss of 50,000 BO per well
- Loss to State and County of Severance and Ad Valorem taxes is \$260,000/well
- Same loss of jobs but happens much sooner

- The Big Horn Basin has 2900 wells
- The result of increasing costs by \$.001/gal of water produces will result in the loss of 23,000,000 BO in reserves to the US.
- That 23,000,000 BO would have given the State and Counties \$120,000,000 in revenue.
- It will also cause us to import an additional 23,000,000 to replace it

Oil Prices Received in Wyoming on Nov 5, 2008

FLINT HILLS RESOURCES CRUDE OIL POSTINGS
P.O. BOX 2917, WICHITA, KS 67201

Effective 7:00 A.M., on dates shown below, and subject to its division orders as amended and supplemented, contracts and other agreements, FLINT HILLS RESOURCES, LP will pay the following prices per barrel of 42 U.S. gallons for merchantable crude oil purchased and delivered into pipelines or facilities authorized by FLINT HILLS RESOURCES, LP, in the fields or area designated below. The following prices are for informational purposes only, do not constitute an offer, and are subject to change or revisions without notice.

Effective Date Bulletin	11/03/08 20080207	11/04/08 20080208	11/05/08 20080209	GVT ADJ
COLORADO				
Colorado D-J Basin	59.7500 *	66.2500 *	61.0000 *	E
NORTH DAKOTA				
North Dakota Light Sour	49.6000 *	56.1000 *	50.8500 *	B
North Dakota Light Sweet	55.2500 *	61.7500 *	56.5000 *	C
North Dakota Medium Sour	43.3500 *	49.8500 *	44.6000 *	B
North Dakota Northern Area	52.7500 *	59.2500 *	54.0000 *	C
North Dakota Sour	36.7500 *	45.2500 *	40.0000 *	B
North Dakota Southern Area	47.6000 *	54.0000 *	48.7500 *	C
TEXAS				
Giddings Sweet Texas	58.7500 *	65.2500 *	60.0000 *	C
Gulf Coast Mix	58.7500 *	65.2500 *	60.0000 *	C
Pearsall Sweet	58.8000 *	65.0000 *	59.7500 *	C
South Texas Heavy	59.0000 *	65.8000 *	60.2500 *	H
South Texas Light Sweet	59.0000 *	65.5000 *	60.2500 *	C
South Texas Sour	52.0000 *	58.5000 *	53.2500 *	D
South Texas Valley Sweet	58.7500 *	65.2500 *	60.0000 *	C
Upper Texas Gulf Coast	59.0000 *	65.5000 *	60.2500 *	C
West Texas/New Mexico Intermediate	60.7500 *	67.2500 *	62.0000 *	C
WYOMING				
Wyoming Asphaltic Sour	36.5000 *	45.0000 *	39.7500 *	L
Wyoming Heavy Sour, using FHR's published gravity scale L	43.7000 *	50.2000 *	44.9500 *	L
Wyoming Medium Sour, using FHR's published gravity scale L	44.8000 *	51.3000 *	46.0500 *	L
Wyoming Sweet	49.0000 *	55.5000 *	50.2500 *	C
Wyoming/Montana General Sour	39.6000 *	46.0000 *	40.7500 *	L

The above prices are based on the use of 100% tank tables or automatic measuring equipment acceptable to us or the pipeline company receiving the oil for our account, with customary adjustment of volume for temperature and full deduction for basic sediment and water. The foregoing schedule of prices is subject to deduction without notice for trucking, pipeline gathering, market adjustments, and other related charges on crude oil purchased from leases.

* DENOTES CHANGE

Page 1 of 1

Printed: 11/05/2008