

ASPHALT



SPECIALTIES CO.

10100 Dallas St. • Henderson, CO 80640 • (303) 289-8555 • Fax: (303) 289-7707

April 26, 2021

Wyoming Department of Environmental Quality
Air Quality Division
200 West 17th Street, 3rd Floor
Cheyenne, Wyoming 82002

**RE: Revised Permit Application No. A0011977
ASCI - Lone Tree Creek Quarry (F028222)
Laramie County, Wyoming**

Mr. Andrew Keyfauber:

Asphalt Specialties Company, Inc. (ASCI) has revised Air Quality Division (AQD) Application No. A001197 to permit the Lone Tree Creek Quarry (F028222) located approximately two (2) miles southwest of Granite in Laramie County, Wyoming. As previously discussed, the proposed Lone Tree Creek Quarry is a Limited Mining Operation (LMO) 15-acre hard rock quarry. ASCI has provided documentation from Laramie County affirming ASCI is not required to go through the site plan process outlined in the Laramie County Land Use Regulation Section 2-2-133 and regulation of the site will be handled by Wyoming Department of Environmental Quality (DEQ).

Proposed activities at the quarry include topsoil and overburden stripping, stockpiling, blasting, crushing and screening activity, and haul truck activity. No concrete batch plants or hot mix asphalt plants will be located at the quarry. ASCI is committed to reducing fugitive particulate matter and will control particulate emissions from the quarry. The primary emission source at the quarry is the haul road. To control haul road particulate emissions, ASCI will pave the haul road. The first material hauled off-site will be transported to an ASCI asphalt plant for use in the production of asphalt used to pave the haul road. ASCI estimates approximately 2,500 tons of material will be hauled off-site prior to the haul road being paved. ASCI anticipates the haul road will be paved within 90 working days from the start of construction (not including shutdowns due to inclement weather). To reduce fugitive particulate emissions, ASCI will apply water as necessary during stripping, stockpiling, crushing/screening, and reclamation activities. In addition, topsoil and overburden stockpiles will be seeded and watered. The portable crushing/screening equipment is permitted separately from the quarry permit (P0031013).

In order to expedite the permitting process, ASCI respectfully requests a public hearing be preemptively scheduled to occur immediately after the 30-day public notice comment period.

Exhibit DEQ 06

ASPHALT

SPECIALTIES CO.

Mr. Andrew Keyfauber – Wyoming DEQ-AQD
ASCI Lone Tree Creek Quarry

April 26, 2021
Page 2 of 2

If you should have questions regarding this permit application, please contact me at 303-289-8555.

Sincerely,



Greg Geras
Land Resource Manager
Asphalt Specialties Co., Inc.
10100 Dallas Street
Henderson, CO 80640
Phone: 303-289-8555



LARAMIE COUNTY PLANNING & DEVELOPMENT DEPARTMENT

Planning • Building

February 10, 2021

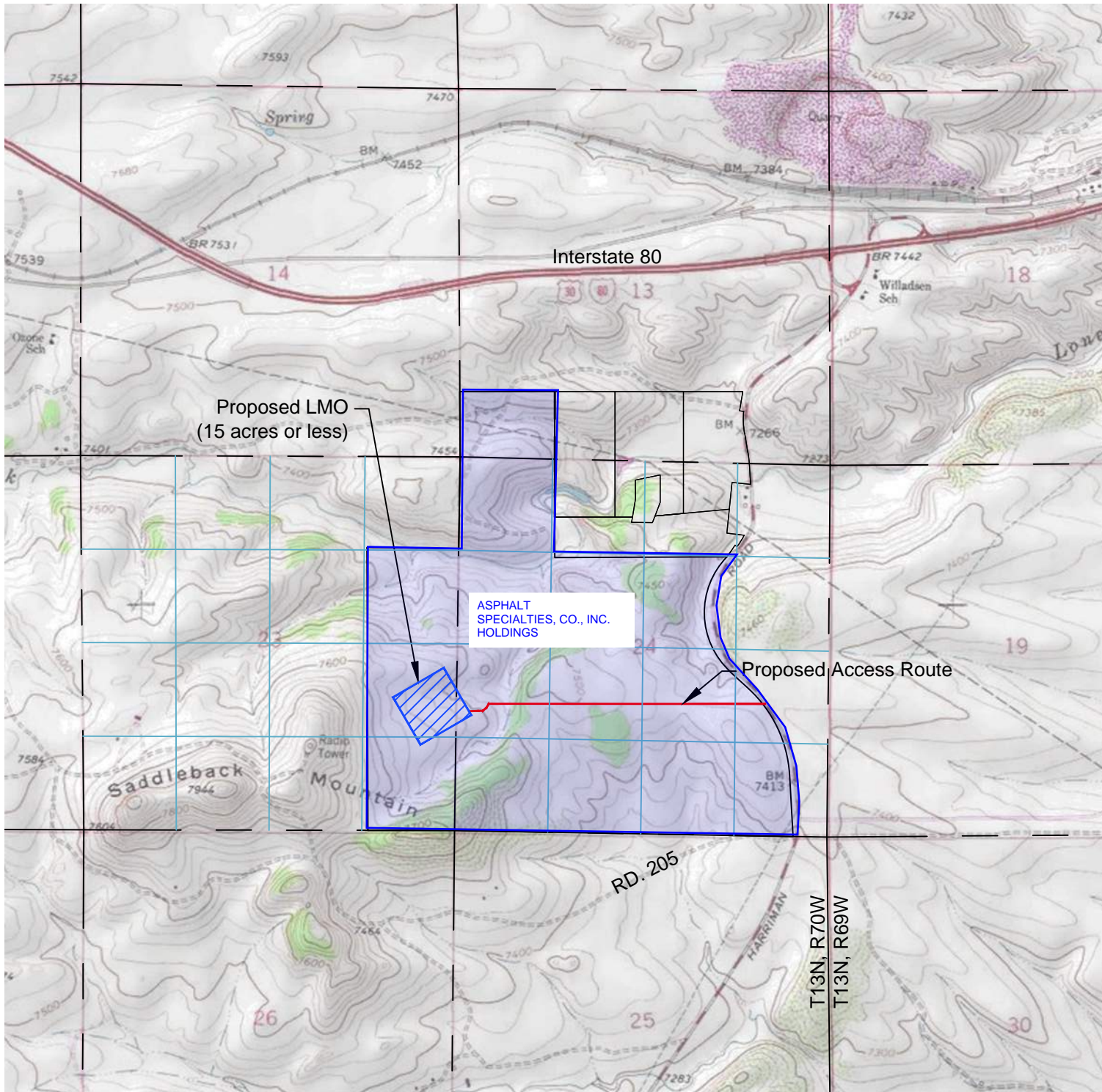
Asphalt Specialties Company, Inc
10100 Dallas Street
Henderson, CO 80640

Dear Mr. Ward,

Laramie County is in receipt of the Supreme Court Decision on case S-20-017. According to the conclusions stated in the ruling, Asphalt Specialties is not required to go through the site plan process outlined in the Laramie County Land Use Regulation Section 2-2-133. Regulation of the site will be handled by DEQ. Other sections of the Land Use Regulations regarding access to Laramie County Roads (Dave Bumann 307-633-4690) and Building Permits (Antony Pomerleau 307-775-7460) if you have any structures will still need to be followed. You may proceed with the project through these other agencies and departments.

Sincerely,

Brad Emmons
Laramie County Planning Director



Map to Accompany
 Notification for Proposed
 Limited Mining Operation:

Lone Tree Creek Quarry

Pit Location:
 14.8 acres located in the NW $\frac{1}{4}$
 SW $\frac{1}{4}$ of Section 24,
 T13N, R70W
 and the E $\frac{1}{2}$ SE $\frac{1}{4}$ of Section 23,
 T13N, R70W

OPERATOR:
 Asphalt Specialties, Co., Inc.
 10100 Dallas Street
 Henderson, CO 80640
 Daniel Hunt
 (303)289-8555

USGS Topo/Quad Base Map:
Granite Canyon, Wyoming

SCALE:
 1" = 2,000'

