

- MINE BOUNDARY
- BLOCK LIMIT
- TRENCH LIMIT
- - - CARNEY SPLIT
- CARNEY NO COAL LINE

NOTES:
 1) Blocks and trenches referenced from EX_MP_15-1_HIS_MINE_R2
 2) Drawing developed from reference Addendum D5-4 Exhibit 2

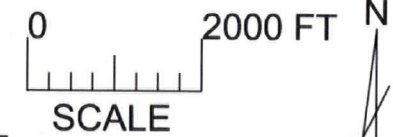


FIGURE 4.6 CARNEY COAL SEAM THICKNESS ISOPACH EAST OF SEAM SPLIT WITH PROPOSED MINE LAYOUT

LQD
 JAN 27 2017
 RECEIVED

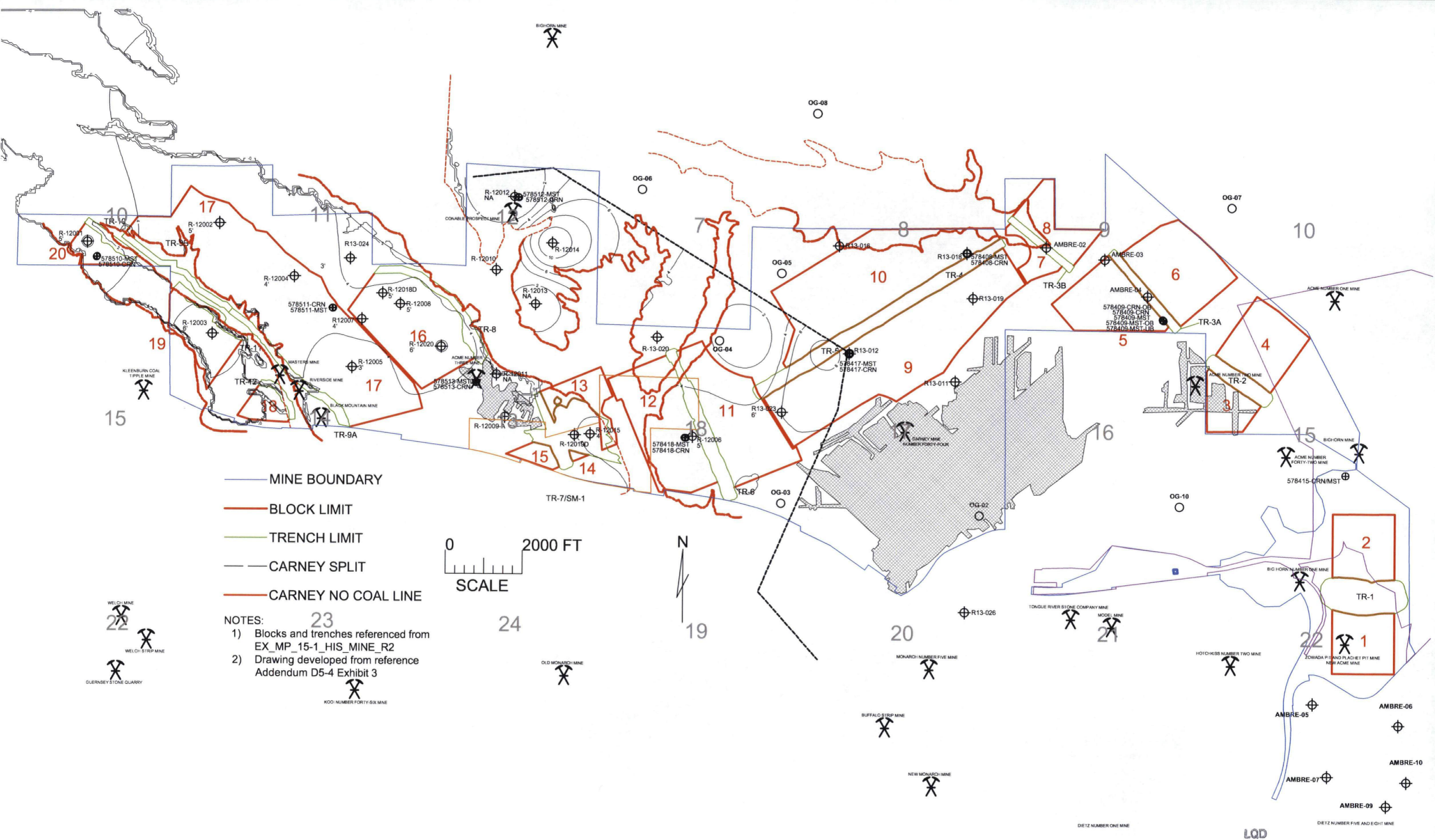


FIGURE 4.7 UPPER CARNEY COAL SEAM THICKNESS ISOPACH MAP WEST OF CARNEY SEAM SPLIT WITH PROPOSED MINE LAYOUT

JAN 27 2017

RECEIVED

LQD

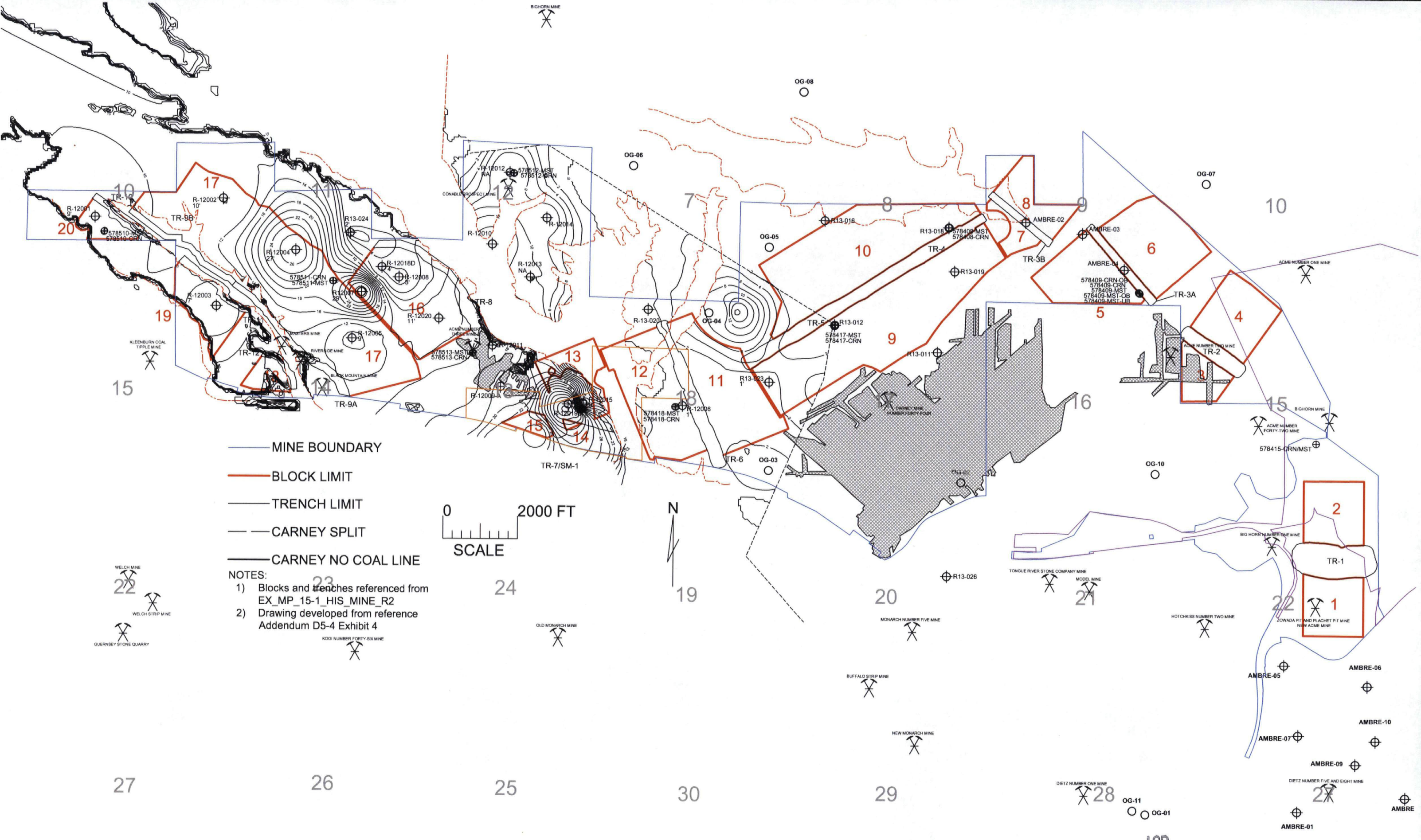
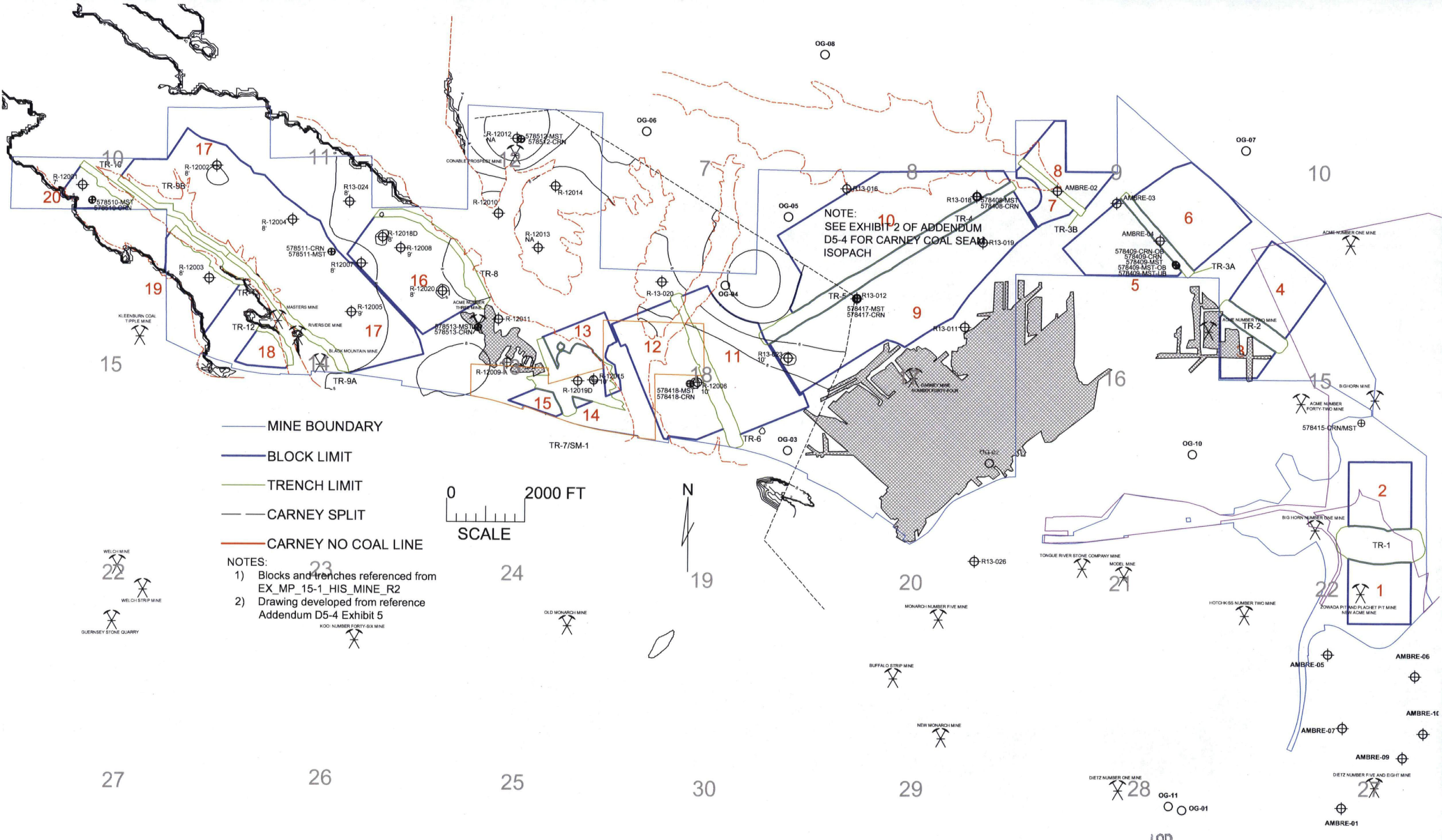


FIGURE 4.8 UPPER AND LOWER CARNEY COAL SEAM INTERBURDEN ISOPACH MAP, WEST OF SEAM SPLIT WITH PROPOSED MINE LAYOUT

JAN 27 2017

RECEIVED



- MINE BOUNDARY
- BLOCK LIMIT
- TRENCH LIMIT
- CARNEY SPLIT
- CARNEY NO COAL LINE

- NOTES:
- 1) Blocks and trenches referenced from EX_MP_15-1_HIS_MINE_R2
 - 2) Drawing developed from reference Addendum D5-4 Exhibit 5

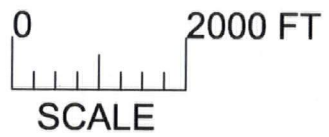


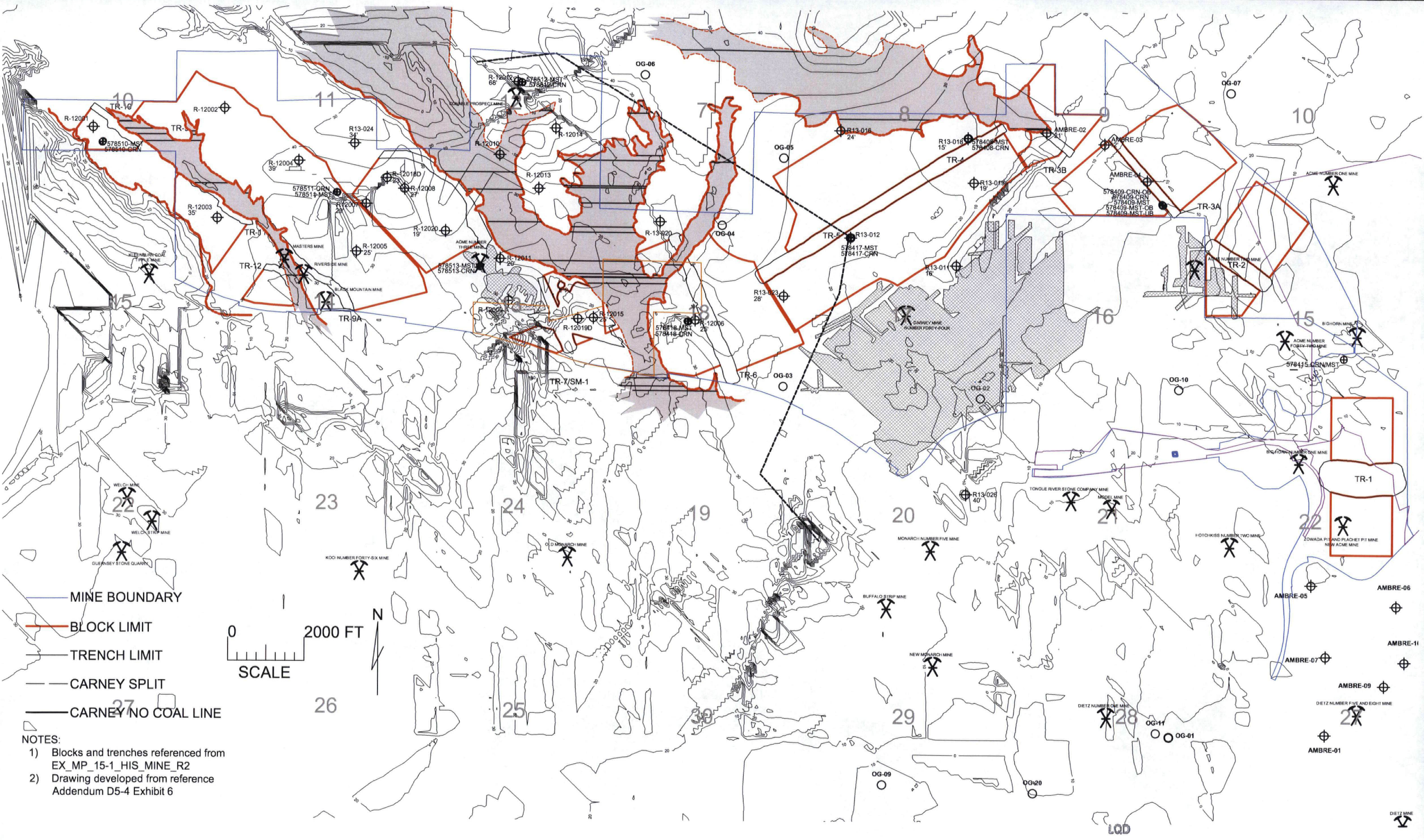
FIGURE 4.9 LOWER CARNEY COAL SEAM THICKNESS ISOPACH MAP, WEST OF SEAM SPLIT WITH PROPOSED MINE LAYOUT

FIGURE 4.9 LOWER CARNEY COAL SEAM THICKNESS ISOPACH MAP, WEST OF SEAM SPLIT WITH PROPOSED MINE LAYOUT

JAN 27 2017

RECEIVED

LQD



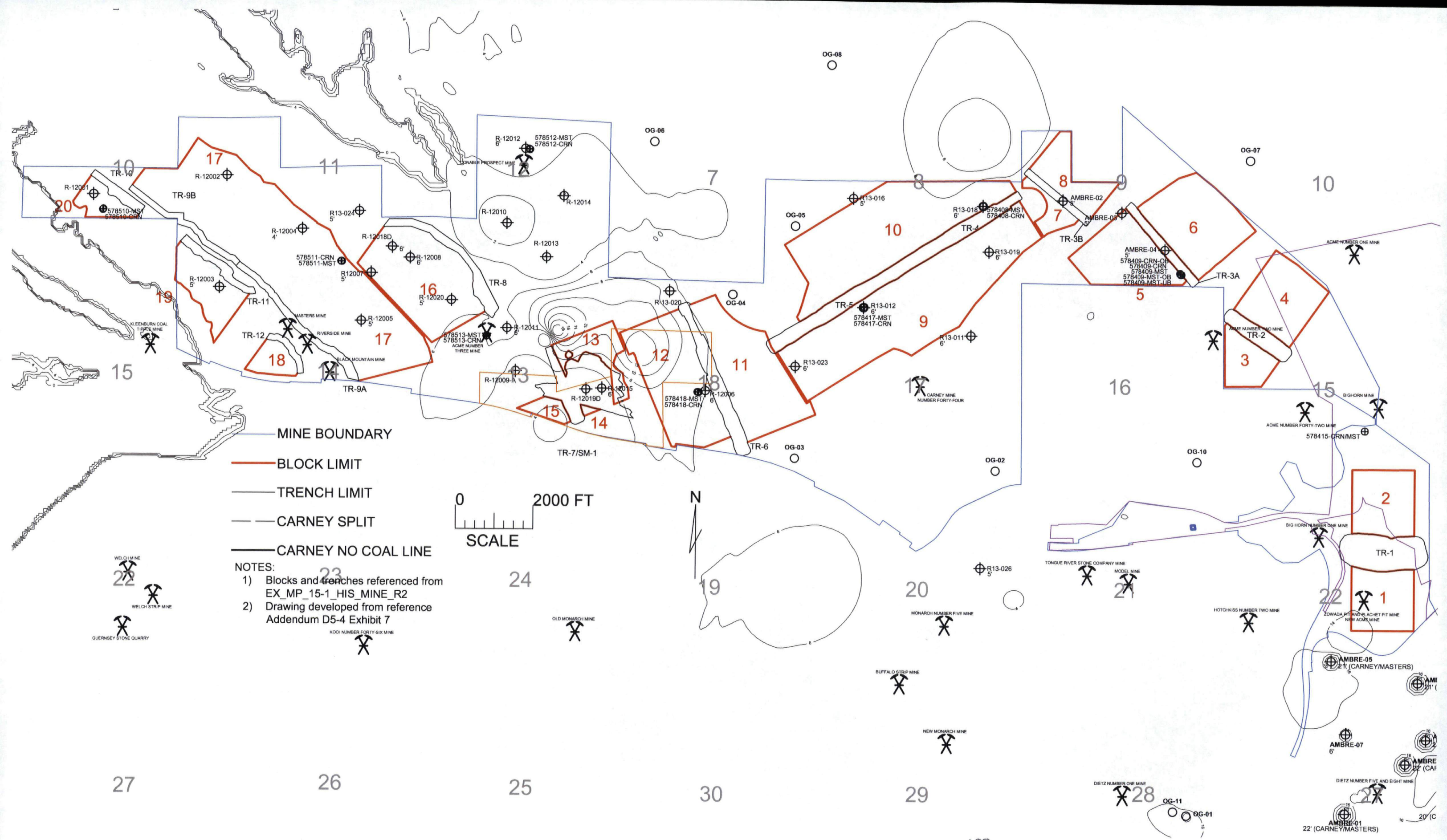
- MINE BOUNDARY
- BLOCK LIMIT
- TRENCH LIMIT
- CARNEY SPLIT
- CARNEY NO COAL LINE

NOTES:
 1) Blocks and trenches referenced from EX_MP_15-1_HIS_MINE_R2
 2) Drawing developed from reference Addendum D5-4 Exhibit 6

FIGURE 4.10. CARNEY AND MASTERS COAL SEAM INTERBURDEN ISOPACH MAP WITH PROPOSED MINE LAYOUT

JAN 27 2017

RECEIVED



- MINE BOUNDARY
- BLOCK LIMIT
- TRENCH LIMIT
- - - CARNEY SPLIT
- CARNEY NO COAL LINE

NOTES:
 1) Blocks and trenches referenced from EX_MP_15-1_HIS_MINE_R2
 2) Drawing developed from reference Addendum D5-4 Exhibit 7

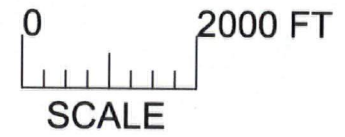


FIGURE 4.11 MASTERS COAL THICKNESS ISOPACH WITH PROPOSED MINE LAYOUT

LQD
 JAN 27 2017
 RECEIVED

