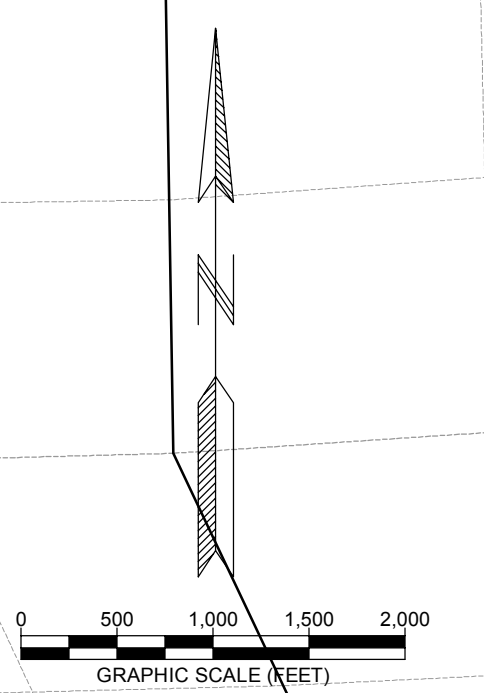


**LEGEND**

	APPROXIMATE SURFACE MINING EXTENTS		WATER LINE
	DISTURBANCE BOUNDARY		PROPOSED WATER LINE
	DISTURBANCE FENCING		TANKS
	HAUL ROAD		SPRING
	STOCKPILE LOCATION		STOCKPILE LOCATION
	PADLOCK RANCH COMPANY		
	OPEN PIT		
	TOPSOIL STRIPPING		
	RECLAMATION		

**NOTE:**  
FENCING WILL BE INSTALLED AROUND DISTURBED AREAS AS IT PROGRESSES THROUGH THE MINE SITE. RECLAIMED AREAS WILL REMAIN FENCED FOR A PERIOD OF FIVE YEARS.

Brook 13



		BROOK MINE SHERIDAN COUNTY, WY 1101 SUGARVIEW DR, STE. 201 SHERIDAN, WY 82801	
<b>YEAR 2022 PROPOSED MINING ON PADLOCK RANCH COMPANY</b>			
Drawn By: MBM Checked By: JGB Date: 1/16/13		www.wwcengineering.com	
FILE: AOC_PERMIT_BUFFER_QUADS			