



Executive Summary for August 2016 Presentation to Lighthouse Resources, Inc. Board of Directors

Prepared by Jordan Sweeney

August 1, 2016

Current Activities:

Big Horn Coal Company (BHC) & KCP Properties, Inc collectively own and control 6,400 acres of agricultural property, located six miles north of Sheridan, WY. BHC leases 4,200 acres of fenced pastures for grazing cattle, has tenants in two rental properties on site, currently there are three lessees in the shop and a tenant to utilize the rail siding for rail car storage. Bomber Mountain, current tenant at the BHC Shop, utilizes two bays for welding and fabrication, BHC has recently extended their lease for a term of 5 years. Three storage leases are being utilized by management members of the Decker Coal Mine. BHC continues to seek additional tenants who are interested in utilizing the vacant space within the shop.

BHC is in the process of rezoning the facilities area from the current Agricultural Use to Industrial/ Commercial. At the request of the Department of Environmental Quality (DEQ), BHC is to demonstrate beneficial use of the shop and rail spur in order for the existing structure to remain in place, post mining. BHC has entered into a Rail Storage Agreement with a current customer to the Decker Coal Mine, to store unloaded unit trains on the BHC Rail Spur. The agreement allowed for BHC to perform the necessary track upgrades to park unloaded cars on the spur in the interim while the rezone application is being prepared.

By entering into a rail storage agreement, BHC is now able to show beneficial use of the rail siding as well as the remainder of the shop facilities area as requested by the DEQ. Big Horn Coal has surveyed the property it intends to rezone (Exhibit A) and will continue to move forward with meeting with the Sheridan County Planning Office in the upcoming months.

Big Horn Coal Environmental Quality Council Update

RAMACO/Brook Mine filed a Petition for Order in Lieu of Consent & Request for Hearing with the Wyoming Environmental Quality Council (EQC) on March 16th, 2016. BHC along with Padlock Ranch to date have not consented to the proposed Mine and Reclamation Plan, as received from RAMACO during February 2016, due to the general vagueness of the proposed plan that would encumber the BHC and Padlock Surface.

Summary:

The EQC serves as an independent entity that reviews matters concerning the prevention, reduction and elimination of pollution and preservation of Wyoming's water, air and land quality. The EQC will hear the evidence and determine whether RAMACO/Brook Mine is entitled to an Order in Lieu of Consent.

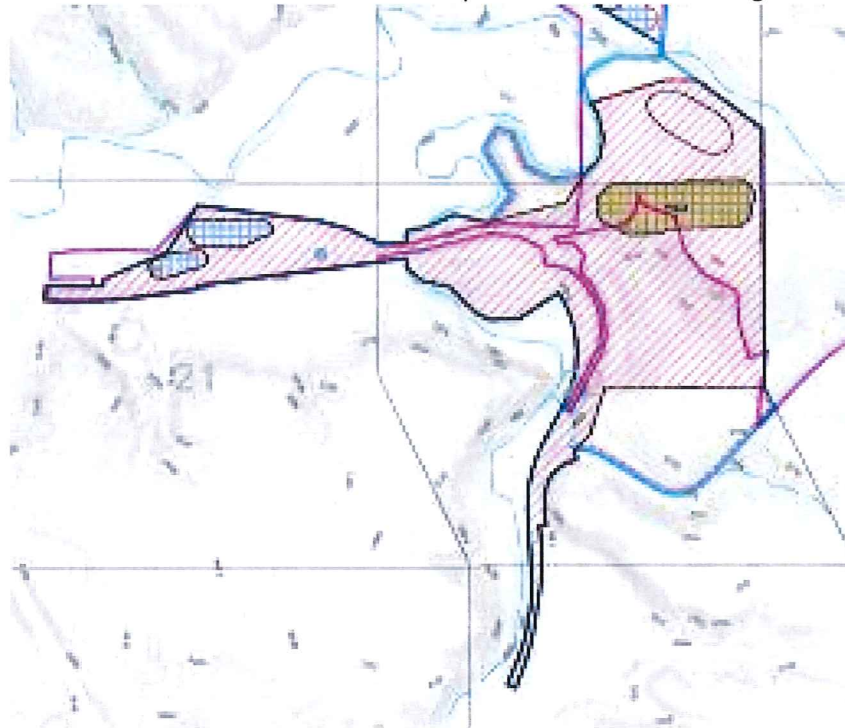
The hearing before the EQC will take place on August 17th and 18th in Cheyenne, WY.



BHC informed RAMACO that their proposed mine plan is in conflict with the current and future operations of the BHC property South of the Tongue River. The proposed mining activity will result in loss of revenue at the BHC property by restricting access to our current facilities based on the following exhibits received from RAMACO in February 2016.

EX 1-1 SURF DISTURB:

- Exhibit 1-1 indicates disturbance of approximately 400 acres of BHC Surface, including the rail spur, loadout facilities, grazing pasture P and primary access route to the Shop, Bridge and property north of the Tongue River.
 - Surface disturbance of the 400 ac. is planned to initiate during 2016.



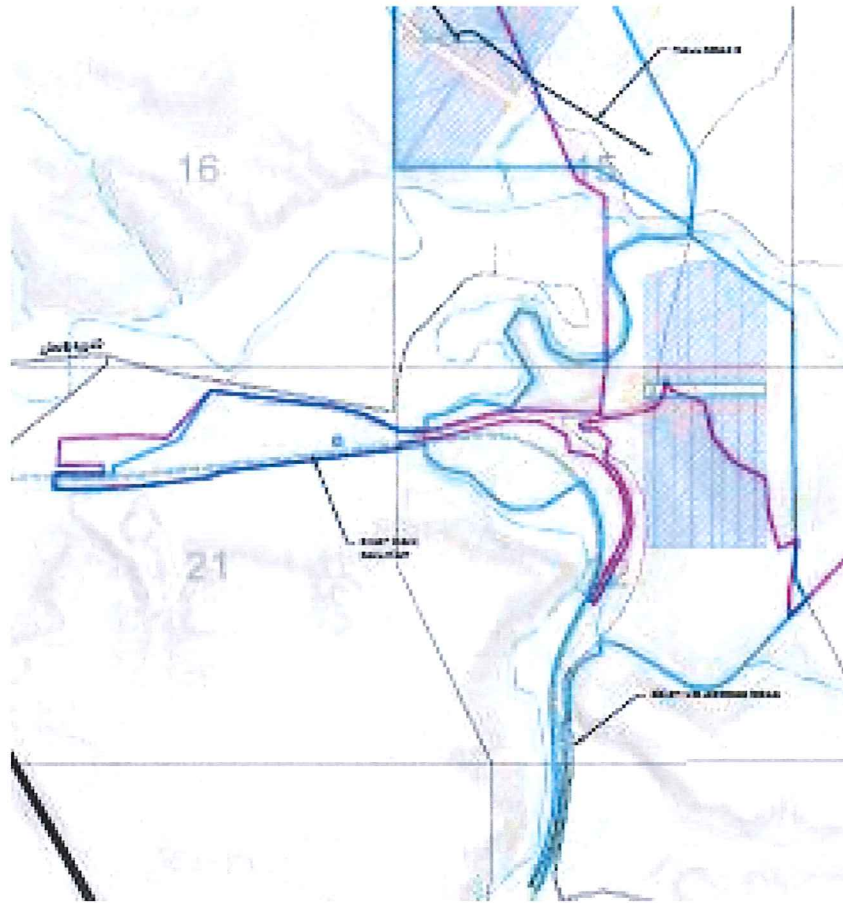
EX 4-1 COAL REMOVE:

- Exhibit 4-1 indicates a trench (TR-1) for surface mining will be located in the historic Pit 1 area directly south of the BHC Shop. Highwall Mining Pannels will extend to the north and south perpendicular to the trench cut.
- The highwall mining panels are located directly under where BHC plans to develop additional track, rail yard and bulk handling facilities across the Pit 1 property. The subsidence monitoring plan found in the RAMACO permit does not adress future operations on the BHC property, therefore does not account for future subsidence potential.
- Coal Removal begins on the BHC Property in 2016 and will last for a 2 year period. After the coal is removed, backfill of the trench will occur immediately.
- Topsoil and final reclamation, however, will not occur for an additional 15-20 years. The BHC property is the first to be disturbed and the last to be reclaimed according to the RAMACO Mine and Reclamation Plan.



EX 3-1 HAUL ROADS LOC:

- Exhibit 3-1 indicates the locations of the haulroads RAMACO plans to develop during the mining phase. BHC received previous plans from RAMACO indicating that RAMACO intended to utilize the bridge that crosses the Tongue River to transport the mineral to a loadout facility. The haulroads now conveniently terminate north of the BHC Bridge. There are also no haulroads or ramps indicated on the map to depict how the mineral is going to be transported from TR-1, "off-site" to be loaded and transported to its destination.



Big Horn Coal Economic Impact:

BHC has calculated annual and future revenue projections from the use of its shop, rail siding and grazing by leasing to 3rd parties. Future revenue projections are based on shop utilization at 70% occupancy, BHC Siding upgraded to handle loaded trains after year two of rental income, and rental escalation for grazing leases on an annual basis. Based on the RAMACO mine plan, BHC assumes the access to the shop and rail siding will not exist during the timeframe that RAMACO has designated to occupy our surface. The economic impact to the BHC Operations as a result of RAMACO’s proposed Mine Plan would result in a loss of approximately \$28 Million in revenue.



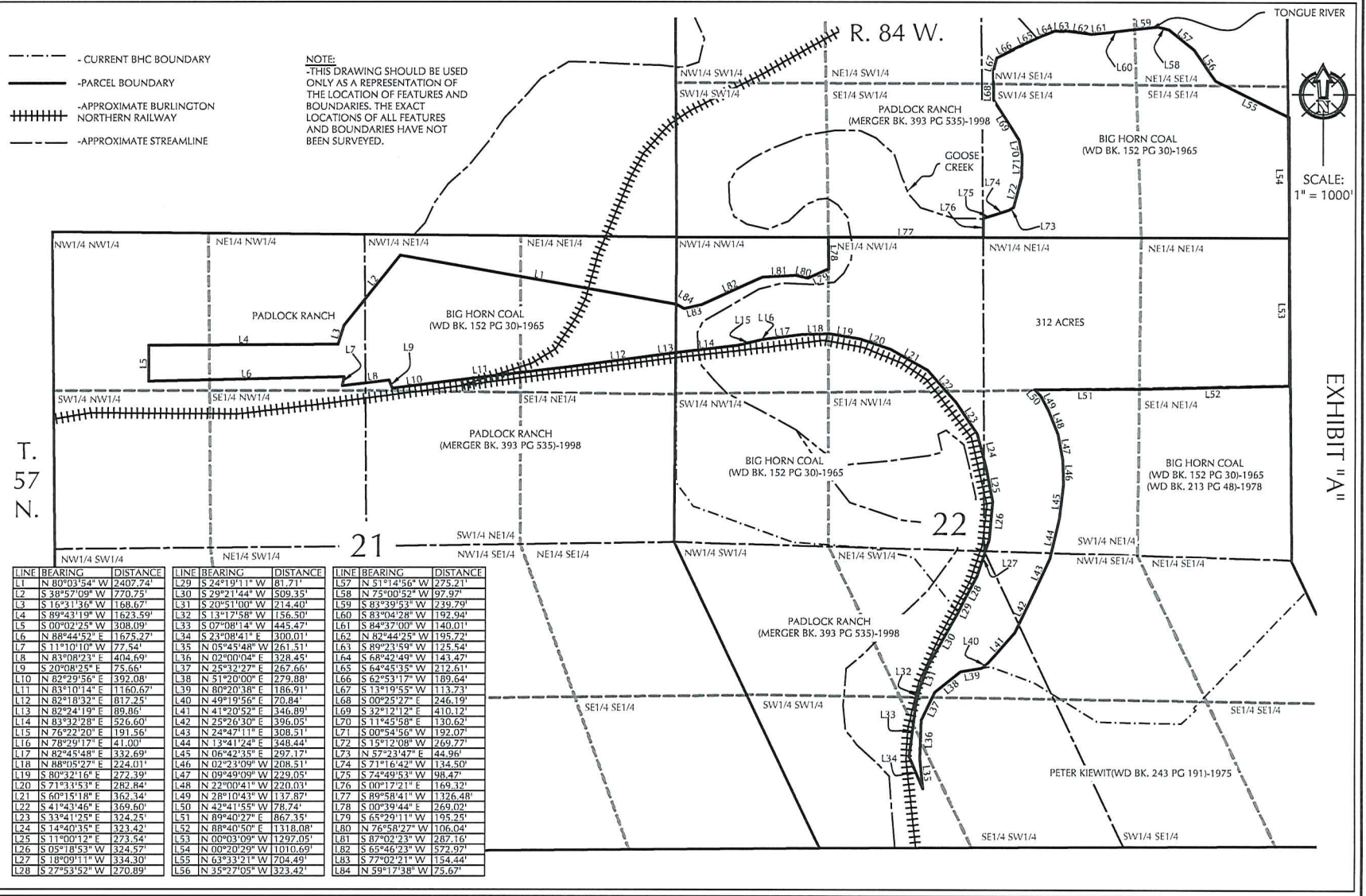
Big Horn Mine Economic Impact	Annually	20 - Years
Shop Utilization	\$ 124,800	\$ 2,496,000
Rail Siding Utilization	\$ 359,160	\$ 25,316,400
Grazing Pasture Utilization	\$ 2,000	\$ 71,500
Total	\$ 485,960	\$ 27,883,900

- - - - - CURRENT BHC BOUNDARY
- - - - - PARCEL BOUNDARY
- ||||| APPROXIMATE BURLINGTON NORTHERN RAILWAY
- - - - - APPROXIMATE STREAMLINE

NOTE:
-THIS DRAWING SHOULD BE USED ONLY AS A REPRESENTATION OF THE LOCATION OF FEATURES AND BOUNDARIES. THE EXACT LOCATIONS OF ALL FEATURES AND BOUNDARIES HAVE NOT BEEN SURVEYED.



SCALE:
1" = 1000'



LINE	BEARING	DISTANCE	LINE	BEARING	DISTANCE	LINE	BEARING	DISTANCE
L1	N 80°03'54" W	2407.74'	L29	S 24°19'11" W	81.71'	L57	N 51°14'36" W	275.21'
L2	S 38°57'09" W	770.75'	L30	S 29°21'44" W	509.35'	L58	N 75°00'52" W	97.97'
L3	S 16°31'36" W	168.67'	L31	S 20°51'00" W	214.40'	L59	S 83°39'53" W	239.79'
L4	S 89°43'19" W	1623.59'	L32	S 13°17'58" W	156.50'	L60	S 83°04'28" W	192.94'
L5	S 00°02'25" W	308.09'	L33	S 07°08'14" W	445.47'	L61	S 84°37'00" W	140.01'
L6	N 88°44'52" E	1675.27'	L34	S 23°08'41" E	300.01'	L62	N 82°44'25" W	195.72'
L7	S 11°10'10" W	77.54'	L35	N 05°45'48" W	261.51'	L63	S 89°23'58" W	125.54'
L8	N 83°08'23" E	404.69'	L36	N 02°00'04" E	328.45'	L64	S 68°42'49" W	143.47'
L9	S 20°06'25" E	75.66'	L37	N 25°32'27" E	267.66'	L65	S 64°45'35" W	212.61'
L10	N 82°29'56" E	392.08'	L38	N 51°20'00" E	279.88'	L66	S 62°53'17" W	189.64'
L11	N 83°10'14" E	1160.67'	L39	N 80°20'38" E	186.91'	L67	S 13°19'55" W	113.73'
L12	N 82°18'32" E	817.25'	L40	N 49°19'56" E	70.84'	L68	S 00°25'27" E	246.19'
L13	N 82°24'19" E	89.86'	L41	N 41°20'52" E	346.89'	L69	S 32°12'12" E	410.12'
L14	N 83°22'28" E	526.60'	L42	N 25°26'30" E	396.05'	L70	S 11°45'58" E	130.62'
L15	N 76°22'20" E	191.56'	L43	N 24°47'11" E	308.51'	L71	S 00°54'56" W	192.07'
L16	N 78°29'17" E	41.00'	L44	N 13°41'24" E	348.44'	L72	S 15°12'08" W	269.77'
L17	N 82°45'48" E	332.69'	L45	N 06°42'35" E	297.17'	L73	N 57°23'47" E	44.96'
L18	N 88°05'27" E	224.01'	L46	N 02°23'09" W	208.51'	L74	S 71°16'42" W	134.50'
L19	S 80°32'16" E	272.39'	L47	N 09°48'09" W	229.05'	L75	S 74°49'53" W	98.47'
L20	S 71°31'53" E	282.84'	L48	N 22°00'41" W	220.04'	L76	S 00°17'21" E	169.32'
L21	S 60°15'18" E	362.34'	L49	N 28°10'43" W	137.87'	L77	S 89°58'41" W	1326.48'
L22	S 41°43'46" E	369.60'	L50	N 42°41'55" W	78.74'	L78	S 00°39'44" E	269.02'
L23	S 33°41'25" E	324.25'	L51	N 89°40'27" E	867.35'	L79	S 65°29'11" W	195.25'
L24	S 14°40'35" E	323.42'	L52	N 88°40'50" E	1318.08'	L80	N 76°58'27" W	106.04'
L25	S 11°00'12" E	273.54'	L53	N 00°03'09" W	1297.05'	L81	S 87°02'23" W	287.16'
L26	S 05°10'53" W	324.57'	L54	N 00°20'29" W	11010.69'	L82	S 65°46'23" W	572.97'
L27	S 18°09'11" W	334.30'	L55	N 63°33'21" W	704.49'	L83	S 77°02'21" W	154.44'
L28	S 27°53'52" W	270.89'	L56	N 35°27'05" W	323.42'	L84	N 59°17'38" W	75.67'

PREPARED FOR:

BIG HORN COAL CO.
P.O. Box 724
Sheridan, WY 82801

T.
57
N.

EXHIBIT "A"

SHEET NO.
1