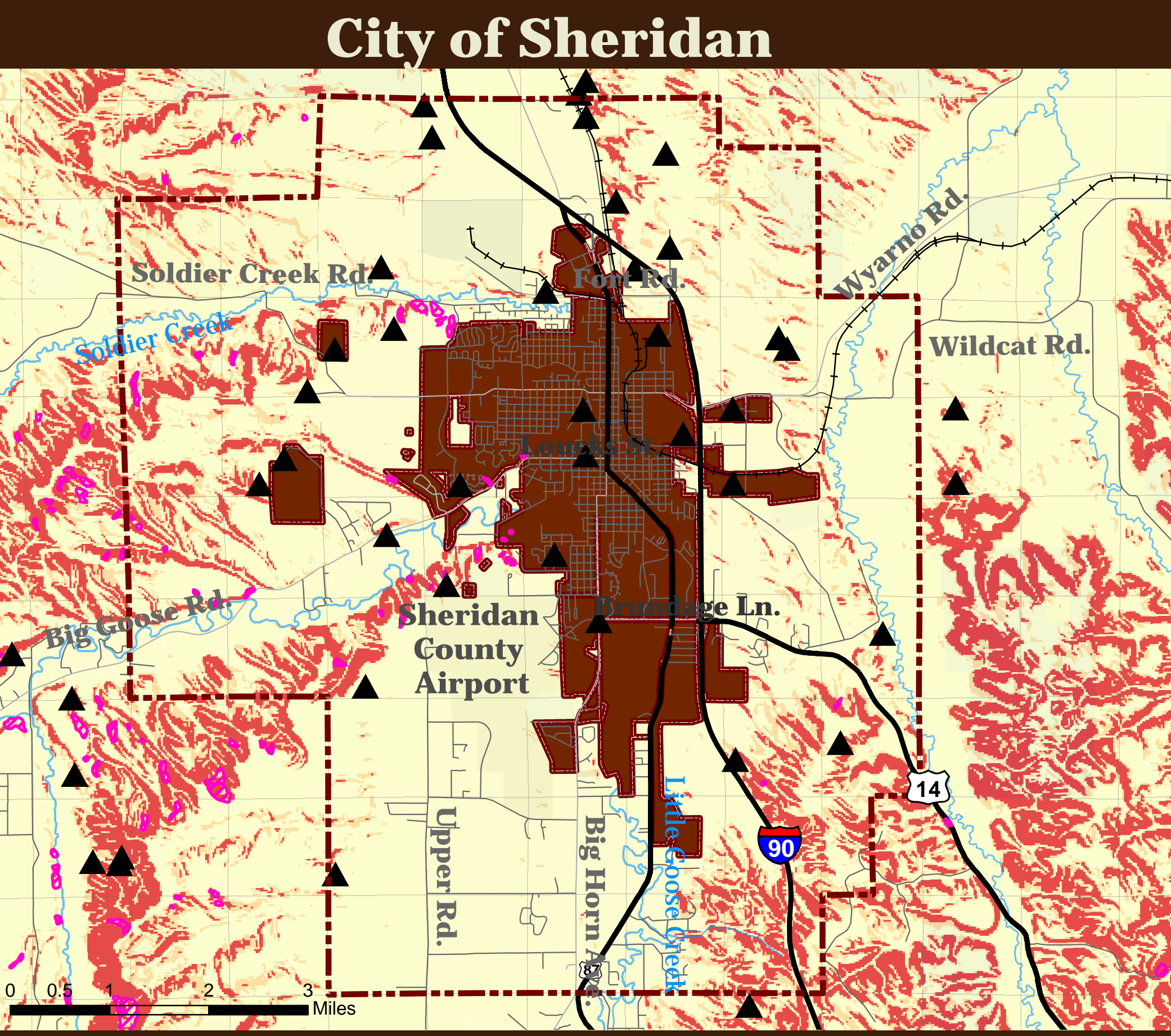
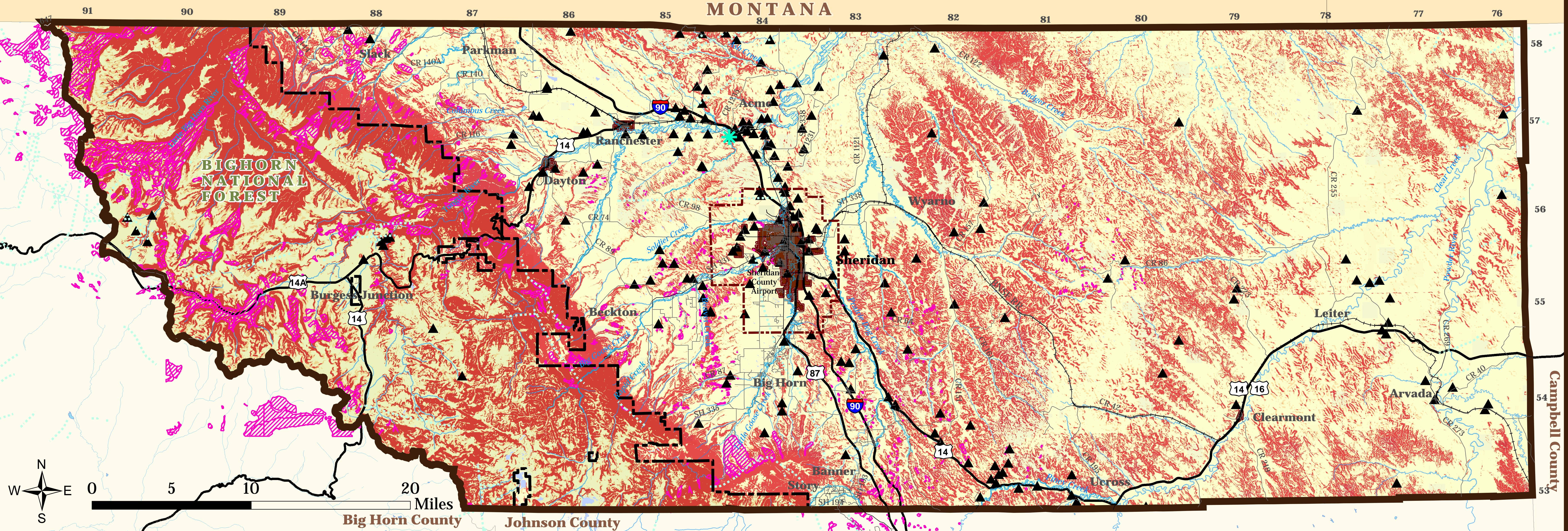


HAZARDOUS AREAS

Sheridan County, Wyoming Comprehensive Plan



Legend

- Incorporated Places
- Sheridan Joint Planning Area
- Bighorn National Forest
- Highways
- Streets
- Railroads
- Stream/River
- 100-Year Floodplain
- 20% + Slope
- Landslide Area
- Faults *
- Abandoned Mine Sites **
- Known Subsidence Area

* Data used for faults on this map was taken from WyGIS through the University of Wyoming's GIS data services. This data originated from the Geologic Map of Wyoming. This dataset contains the teeth of thrust faults, shear zones, bars and balls, impact structure, and diatremes.

** The Abandoned Mines Division of the Wyoming Department of Environmental Quality uses currently available data to generate these sites. Not all mines are known, identified, mapped, or recorded.

Source: Sheridan County GIS, U.S. Census Bureau 2000
TIGER data, Clarion Associates
September 19, 2008

FIGURE 5

Exhibit 46

